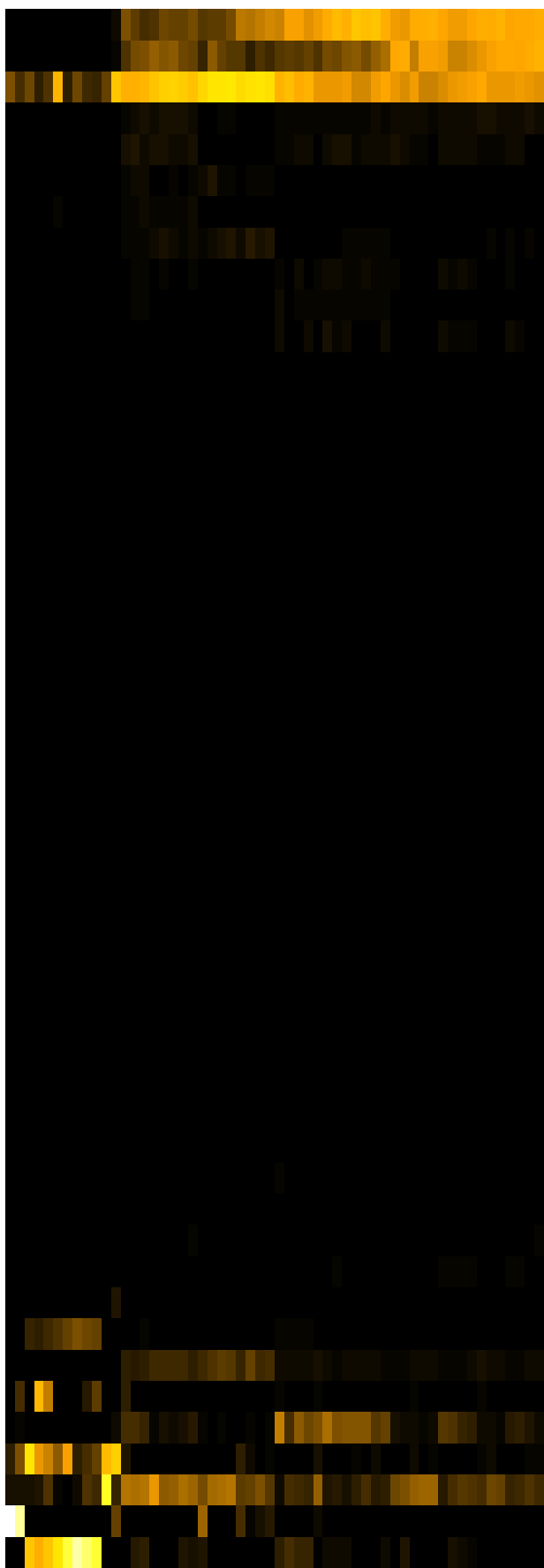
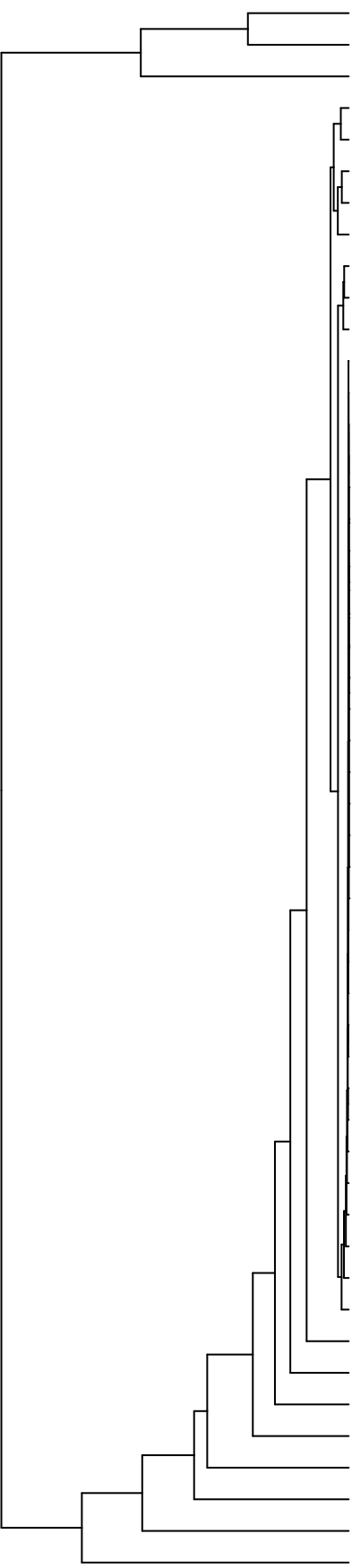


Group006  
 G Final -PMA  
 F Final -PMA



- Veillonella
- Haemophilus
- Streptococcus
- Eikenella
- Aggregatibacter
- Rothia
- Gemella
- Schaalia
- Campylobacter
- Leptotrichia
- Prevotella
- Lancefieldella
- Saccharibacteria\_(TM7)\_[G-6]
- Absconditabacteria\_(SR1)\_[G-1]
- Cutibacterium
- Phyllobacterium
- Capnocytophaga
- Acidovorax
- Acinetobacter
- Lachnospiraceae\_[G-2]
- Serratia
- Novosphingobium
- Leifsonia
- Agrobacterium
- Sphingobium
- Riemerella
- Microbacterium
- Siccationidurans
- Saccharibacteria\_(TM7)\_[G-5]
- Lautropia
- Saccharibacteria\_(TM7)\_[G-1]
- Delftia
- Lachnoanaerobaculum
- Oribacterium
- Solobacterium
- Alloprevotella
- Actinomyces
- Catonella
- Stomatobaculum
- Pseudomonas
- Porphyromonas
- Staphylococcus
- Salmonella
- Granulicatella
- Raoultella
- Fusobacterium
- Klebsiella
- Neisseria
- Enterobacter
- Citrobacter

- F28914\_S599
- F28914\_S442
- F28914\_S446
- F28914\_S443
- F28914\_S445
- F28914\_S597
- F28914\_S123
- F28914\_S122
- F28914\_S128
- F28914\_S126
- F28914\_S283
- F28914\_S282
- F28914\_S285
- F28914\_S287
- F28914\_S440
- F28914\_S437
- F28914\_S593
- F28914\_S438
- F28914\_S596
- F28914\_S595
- F28914\_S118
- F28914\_S280
- F28914\_S277
- F28914\_S115
- F28914\_S113
- F28914\_S274
- F28914\_S120
- F28914\_S278

Samples

Genus